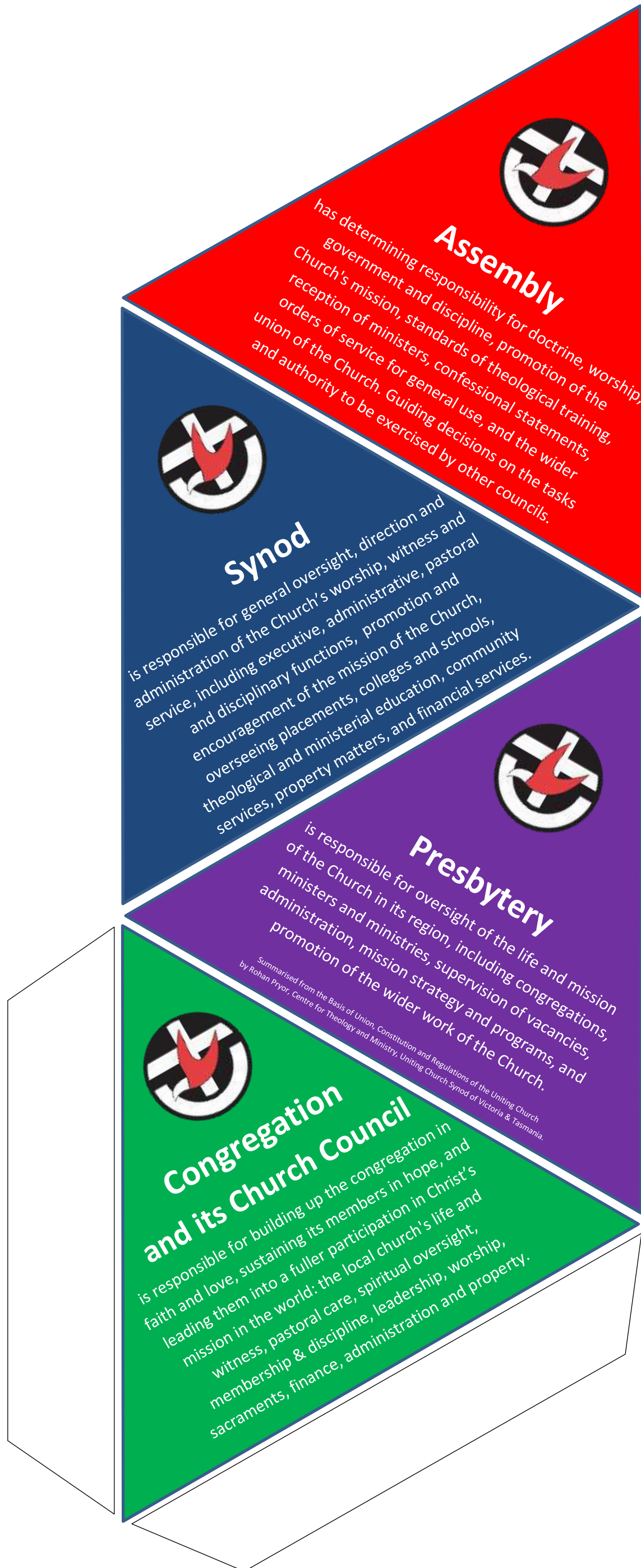


Uniting Church inter-related councils represented by a regular (equilateral) tetrahedron



CENTRE FOR
THEOLOGY
& MINISTRY

UNITING CHURCH IN AUSTRALIA  SYNOD OF VICTORIA AND TASMANIA

Instructions:

1. Cut around the outside of the whole shape (include the three white trapezoid tabs, at left)
2. Fold along all lines
3. Fold the trapezoid tabs under the corresponding sides
4. Stick tape along the edges to form a pyramid.
5. Remember that each council is related to every other council in the Uniting Church, and it is the task of every council to "give heed to other councils of the Church" to be "united by mutual submission in the service of the Gospel" (*Basis of Union*, par 15)

 **Living
Leadership**



Leadership characteristics needed for inter-related councils:

- Attentiveness
- Diligence
- Humility
- Conviction