



Property Services



The **Property Services team** is here to support congregations, presbyteries and the Synod with “all things property”. This ranges from governance support to property trusts, to day-to-day queries, to purchase and sale of property, and to project management and development of facilities suited to today’s needs. We can help with compliance and regulation issues and can assist you in managing your relationships with other church bodies such as Uniting Vic.Tas and AgeWell.

We are directed by your needs and bring property expertise to bear to serve the missional purpose and requirements of the Church’s activities.

Back Row: Russell Craig Brown, David Brown, Peter Thomas, Neville Bion

Middle Row: Natalie Brown, RosyIn Groves, Costas Englezos, Blake Kempthorne, Steve Abonyi

Front Row: Vivi Zhao, Sarah Pick, Mark Buchanan (Missing: Rina Neustroski, Lucia Fitzgerald)



Hammad Hussain

RECENT PROJECTS



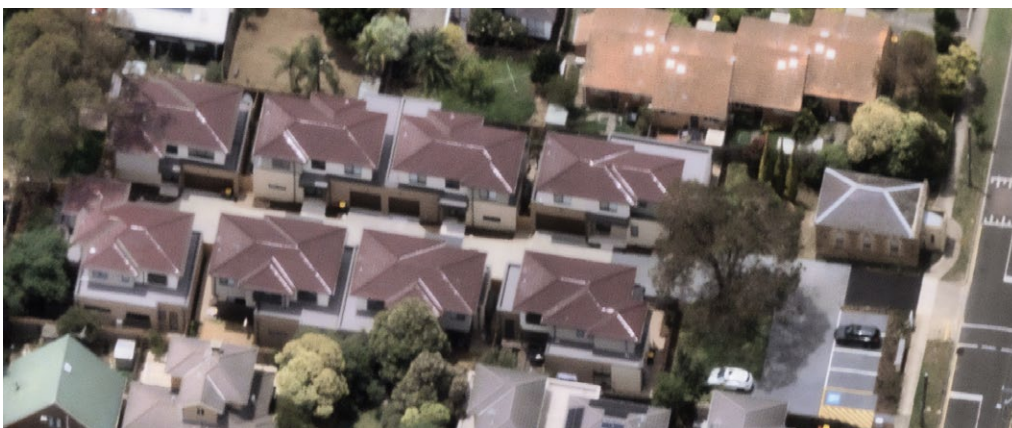
COBURG UC

Coburg Uniting Church undertook an 18-month renovation on their facility at Virginia Street. It modernised and upgraded the worship space; enabling all ability access, beautiful natural light and practical spaces for the congregation including meeting rooms, crying room, offices and more. The feedback from the congregation has been very pleasing, with the warmth of the spaces assisting with community gatherings and a new audio visual system providing terrific sound for the multitude of musical performances that form part of their worship.

ORMOND UC

Ormond Uniting Church took on a major extension and renovation to their facilities. The main worship space has been totally transformed with disabled access, new flooring, lighting, heating and a flexible worship space that can be oriented either 'side to side' to suit their usual Sunday services or 'front to back' to serve large services. A new extension to the rear has provided modern bathroom facilities, a re-heat commercial kitchen as well as offices and a gathering area. This has already opened up new ministry opportunities including a monthly community lunch being provided in conjunction with the local council.

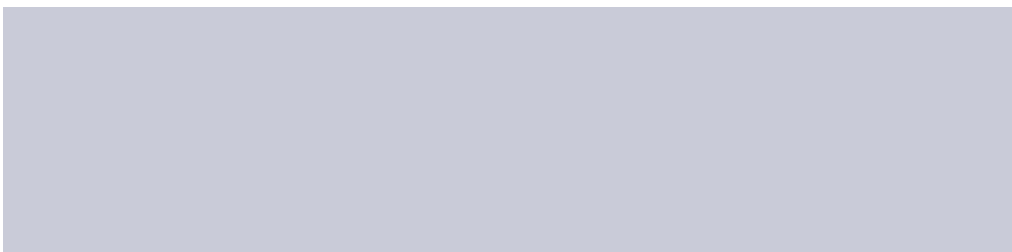




BOX HILL NORTH

The Manningham Cluster had 'surplus to mission' land (following its amalgamation with Templestowe) at Woodhouse Grove, Box Hill North. Over a two-year period they developed a total of eight dwellings on the site (4 x 4 Bed) and (4 x 3 Bed). All the properties have been retained by the congregation and leased at market rates, providing an income and future sustainability for the Manningham UC.

The properties are separately titled meaning that one could be occupied as a manse and others can be sold periodically should the congregation require the capital to be unlocked. The heritage-listed Wesley Chapel was maintained on the site and a new disabled toilet built to enable its use.





SHEPPARTON OP SHOP

The Shepparton Uniting Church undertook demolition of their small shop with limited storage space and high demand. They replaced it with a fit for purpose large facility that has already begun to draw in new customers. The design allows for multiple sorting rooms, terrific staff facilities and a shop that can properly showcase the donated goods in an attractive retail fashion, allowing the volunteers to make more sales in a better supported and safe environment.

The exterior design blends seamlessly with the adjacent church facilities and completes a wonderful 'Uniting Church Campus' for the Shepparton and surrounding congregations and communities.

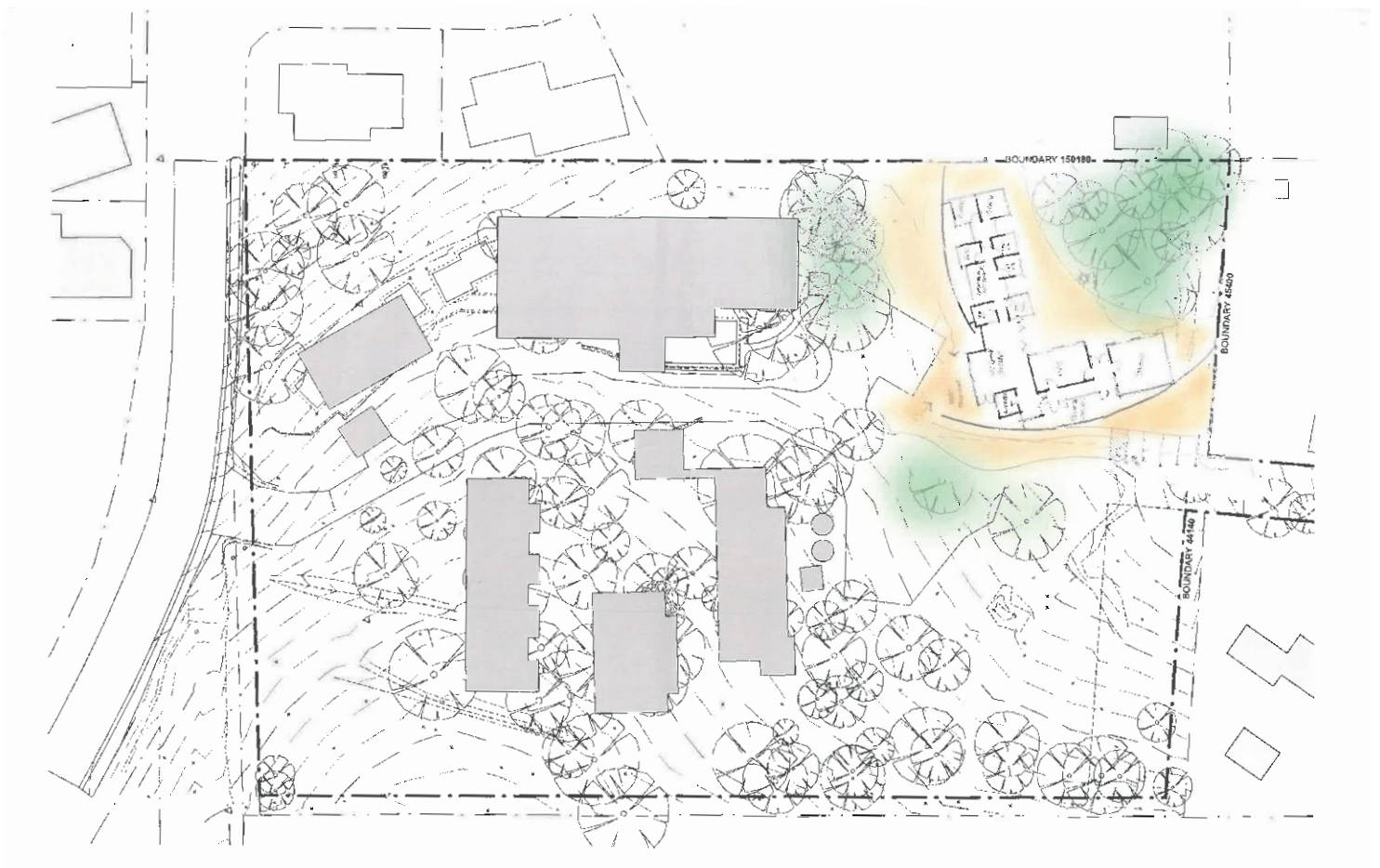
PLANNED LEPRENA FACILITY AT KINGSTON, TASMANIA

UCA Kingston has proposed co-location with Leprena on the Kingston site in Tasmania.

A Project Control Group (PCG) has been established including members from UAICC, Kingston congregation and Synod Property to oversee the proposed building of a new commercial building to accommodate the Leprena UAICC state office.

The PCG will be progressing through a development design process with the intention of submitting a Planning Permit in early 2026. If all checks and balances are satisfied, then the PCG will prepare a Building Permit Application in anticipation of a potential build start date in early 2027.

The diagram below shows the proposed location and layout of the new building on the site with the existing buildings, which include the worship/community centre, manse and supported accommodation (highlighted in the solid grey). The Kingston Community & Leprena Regional Group are excited and proud at the prospect of this future co-location in the spirit of walking with First Peoples.



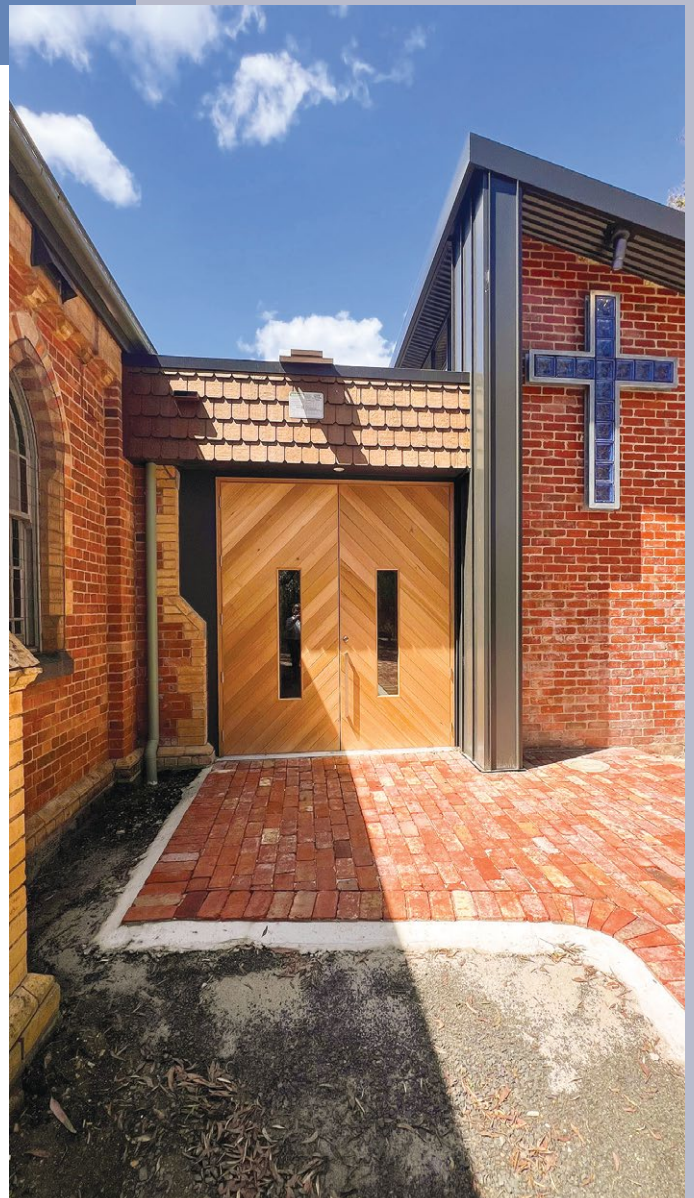


ELTHAM MONTMORENCY

The Eltham Montmorency Uniting Church congregations consolidated at the Eltham site, 810 Main Road, Eltham. The Montmorency site along with a manse in Eltham were sold, making available property sales proceeds for the redevelopment of the church at the Eltham site.

The original church on the site was built in the 1880s. The extension and upgrade to the site includes a modern multi-purpose venue extension, new kitchen, all-ability toilet upgrades and a new ramp linking the upper carpark area to the main entry. All areas are accessed on one level and are interconnected.

A cross and stained glass window were saved from the Montmorency site and are featured in the new extension to commemorate the past. The project is testament to what can be achieved with a consolidation of resources and a vision for the future.





Uniting Church in Australia
SYNOD OF VICTORIA AND TASMANIA



Mission Resourcing Unit

Property Services



We are here to help our people and the Church navigate an increasingly complex property world. We like to engage with you, at "your place" wherever possible. We support everything from the "day to day" things through to delivery of major construction projects.

Please don't hesitate to call on us if you have a question, are concerned about property conditions or on any other property-related matter.

**Come and
meet the team
at morning
tea and lunch**

KEY CONTACTS:

Peter Thomas
Director Property Services
Ph: 0410 487 373

Sarah Pick
Manager Assets and Administration
Ph: 0456 919 464

Steve Abonyi
Project Finance Business Manager
Ph: 0438 128 793

Neville Bion
Data Project Officer (ESM & Property Safety)
Ph: 0484 779 351

property@victas.uca.org.au