



A Placement Profile

A1 Presbytery	Tasmania Presbytery		
A2 Name of Placement	Cradle Coast Uniting Church Cluster 1.0		
A3 Placement city/suburb/town	Devonport, Penguin, Burnie, Stowport, Somerset and Wynyard		
A4 Church/Office location(s)	Individual churches		
A5 Congregations and agencies associated with this placement	Devonport UC, Penguin UC, Burnie Regional UC (BRUC) includes Mount Street - Burnie and Stowport, Wynyard UC		
A6 Ministry leadership being sought	Specific ministry role:	<input type="text"/>	
	Minister of the Word <input checked="" type="checkbox"/>	Deacon <input checked="" type="checkbox"/>	Ministry of Pastor <input type="checkbox"/>
	Ordinand <input type="checkbox"/>		
A7 Specific details	Additional placement <input type="checkbox"/>	Replacement placement <input type="checkbox"/>	
	Full Time <input checked="" type="checkbox"/>	Part Time <input type="checkbox"/>	Time fraction <input type="text"/>
	Earliest Start Date:	1/07/2024	
A8 Placement term	Undefined <input checked="" type="checkbox"/>	Up to 10 years (see Reg 2.7.3(a))	
	Fixed Term	Required for non-congregational placements (see Reg 2.7.3(b))	Years <input type="text"/>
A9 To be completed by Presbytery, with reasons given on page 20:	Is permission sought to advertise? Yes <input checked="" type="checkbox"/> No <input type="checkbox"/>		
	Is a Priority Placement recommended? Yes <input type="checkbox"/> No <input type="checkbox"/>		
A10 Website	Penguin - https://penguin.ucavictas.org.au/		
A11 Social Media	Penguin - Uniting Church - Penguin/Facebook Wynyard - Wynyard UC Facebook Facebook - Devonport Uniting Church		
A12 Google map link	https://www.tourtasmania.com/nw/		
A13 Area map (paste image)			





DEVONPORT



PENGUIN



STOWPORT



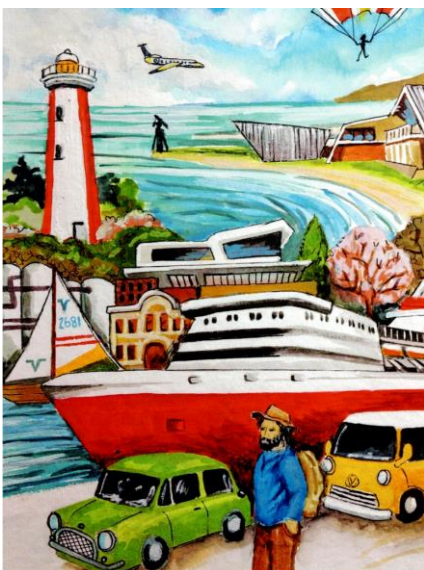
BURNIE



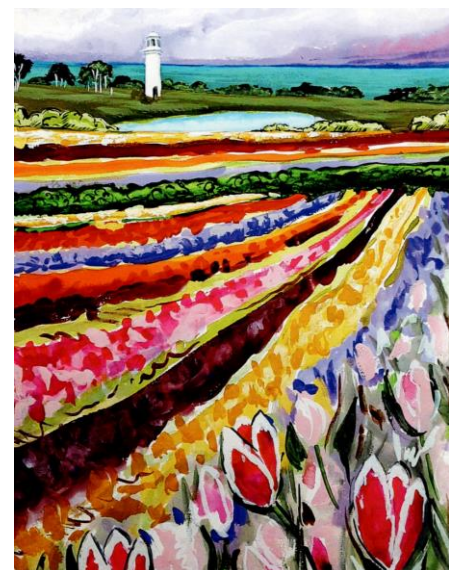
SOMERSET - Camrise



WYNYARD



We acknowledge and thank Sue Holm for her art works depicting the North West coast.



B The Congregation

B1 Tell a potential minister about this placement and yourselves, in your own words and pictures, in no more than one page. Share something of your congregation's values, beliefs and ways in which you live out and share the gospel message.

Include comment about why you need a new minister. How will this placement be exciting, challenging, and attractive to a minister? How can God be served in new ways here? What do you want the Minister to do with you and for you?

This is your chance to 'be creative' and catch the attention of someone who is thinking of sharing their call, their gifts, their life with you.

The Cradle Coast is the coastal area of picturesque North-West Tasmania between Devonport and Wynyard and inland to Cradle Mountain. The UCA Cradle Coast Cluster includes Devonport, Penguin, Burnie, Stowport and Wynyard Congregations.

Our congregations have been working together and sharing ministers for the last 8 years, which has proved challenging yet successful and a blessing.

Each of our congregations has active lay preachers and/or worship teams, with regular attendees.

If you are seeking relief from constant city traffic commuting, Cradle Coast placements offer peaceful driving and natural beauty around each corner.

DEVONPORT

Devonport Worship services have taken on more varied forms with a roster of Worship Teams leading worship. We have fostered contacts with First Nation people and the Pride community, and we financially support one of our resource ministers to work one day a week with the Pride community.

On our focus table for worship, we have two ceramic hands joined together, one black and the other white. This has come to mean a great deal to members as it seems to symbolise the acceptance of all people before God and a call upon us to act likewise. For some of us our challenge is to make the scary move beyond the faith we held from Sunday School days to a more theologically diverse worshipping community.

PENGUIN

OUR VISION - Penguin Uniting Church strives to be an open church. Open to God, to one another and to the community.

OUR MISSION - Love God, Ourselves and our Neighbours.

The Penguin community is friendly, happy & very community minded ie community acts positively when something is needed by someone or the community. We look out for each other ie a strong neighbourly attitude. The community use our facilities regularly ie our location is central to the community. Eg Penguin In Pink, Big Morning Tea etc. The local evangelical church 'The Rock' use our church for prayer meetings. We actively engage with and support the PALM (Pacific Australian Labour Mobility scheme) workers when they are here on the Cradle Coast.

Penguin is a busy tourist hot spot - apart from just visiting the town they come to see the "big Penguin" and our iconic church building. Penguin has a very active History group, Op shop and 'Penguin Makeover Committee' all of which we support regularly

We believe to have a minister would help us to be more accountable, support us in our missional work, training, worship services and study resources. Also, some pastoral care visits as necessary.

Our congregational members are very active & hard working who are very supportive of any events held.

Demographic is predominantly from around retirement age onwards. There are some younger families who attend on special occasions. Penguin Congregation uses the Revised Common Lectionary.

BURNIE REGIONAL UNITING CHURCH CLUSTER = Burnie and Stowport

BRUC Cluster is seeking a minister to guide and re-energise us and to suggest ideas to help us grow our membership and continue to maintain and revitalise our worship services and church life.

We are seeking a resource minister who would lead us in Pastoral Care and encourage Visiting Team training.

Members of our congregation participate in local groups and activities and go with God into these activities

WYNYARD

Our congregation is seeking ministers to guide us, nurture us and revitalise us in our journey of faith and church life. Our priorities are serving the Lord through witness, worship, mission and service within our local communities. We are open to change and willing to be guided by our new ministers, though with some, there is reluctance to change on traditional activities and roles.

Recent ministers have prepared the way for us to follow in the way of Jesus more radically, for which we are grateful. The congregation has always been welcoming and caring, and supportive of each other in action and prayer. Everyone contributes to the life of the congregation in some way.

We do not expect the new ministers to attend every meeting, but when-ever possible. We would like them to undertake some visitation, with other church family members continuing to carry out most of the pastoral care.

We have a variety of churches in Wynyard, with a monthly meeting attended by most of the church leaders. We have some Ecumenical connections, e.g. Easter Community Services, Nursing Home service roster, support with the Community Carols by Candlelight in the Gardens, World Day of Prayer Service.

We have a children's ministry, in the form of brick builders (aka Lego) and Messy Church. We have an active UCAF. The Coffee 'n' Chat group meets monthly at a local café.

Wynyard congregation organises 2 major fundraiser/outreach community events, which contribute considerably to our church coffers. These are in the form of our Fair/ Market days (i.e. our own BBQ stall, Devonshire Teas, plant and cake stalls, garage sale; with Community members invited to hold their own stalls). We host pancake day and mid-year social lunches. We have our Harvest Sale of Goods with funds going to support 'Grandparents Raising Grandchildren' and other local needs. We also support the local chapter of The Smith Family organisation.

B2 List and explain any particular priorities which the congregation has identified and which it will address in the next two to five years?

DEVONPORT

Resourcing and training lay worship leaders
Explore ways of intergenerational approach

PENGUIN

The four key priorities are Worship, Pastoral care, Missional outreach and Resource ministry/education

BURNIE REGIONAL

Pastoral care visits at home and in Aged Care Facilities for older congregation members.

Resourcing training, leading worship and pastoral care.

Our priorities are worshipping, witnessing, and serving the Lord, with our main focus being leadership in worship and proclamation of the Gospel, nurturing people of all ages in their faith, spiritual development and capacity to share faith with others

WYNYARD

Our ageing numbers are in decline, new membership is low, but with faith we still need to explore the new direction the Holy Spirit is guiding us within our church.

Explore the use of our property with our community.

B3 Does this placement relate to more than one congregation?

If so, provide details on page 16.

Yes

No

**B4 What ethnic and language groups are represented in the congregation?
What proportion of the congregation does each represent?**

<p>DEVONPORT Mostly 2nd peoples, and with seasonal workers from the Pacific Islands</p> <p>PENGUIN Predominantly English - PALM workers join us occasionally when working on the coast</p> <p>BURNIE REGIONAL None, only English speaking</p> <p>WYNYARD No ethnic groups attend Wynyard</p>

B5 What languages are spoken in the life of your:

Congregation, by		Community, by	
Penguin			
Individuals	English	Individuals	Predominantly English
Groups	English	Groups	English, Indian, SE Asian languages, Dutch/European

Congregation, by		Community, by	
Wynyard			
Individuals	English	Individuals	English
Groups		Groups	

Congregation, by		Community, by	
Devonport			
Individuals	English	Individuals	English
Groups	Tongan	Groups	Asian

Congregation, by		Community, by	
BURNIE REGIONAL			
Individuals	English	Individuals	English
Groups	English	Groups	English

B6 What languages are spoken by the congregation in worship?

English

B7 Describe any involvement your congregation has in covenanting activities.

DEVONPORT

Recognising NAIDOC week, Day of Mourning service and making the most of inviting one/some of the Elders to specific events we have while making the most of the Assembly resources for these events. Many in our congregation attended the Yes Launch in Devonport in 2023.

PENGUIN

Support any aboriginal covenanting events and use resources as provided by UCA

BURNIE REGIONAL

Nil

WYNYARD

Cradle Coast Cluster has a strong relationship with first nations representatives.

B8 List any UCA Schools and/or agencies (Uniting VicTas, Uniting AgeWell) with which the congregation has an existing relationship.

DEVONPORT

Some volunteer support with Uniting AgeWell at their local aged care facility.

PENGUIN

Uniting (VicTas)
Uniting World
Frontier Services

BURNIE REGIONAL

Uniting (VicTas)
Uniting World
Frontier Services

WYNYARD

Uniting appeals
Frontier Services
Leprosy Mission

C Mission

C1 List three of your missional activities that your congregation does best?

DEVONPORT

Regular coffee events and lunches outside our premises, inviting folk with no church connection. Supply food and books for the Outside Box free of charge to those who need it, and support the NW Pride community funding ministry for one day a week.

PENGUIN

1. Grandparents raising grandchildren

Through Pancake Day, morning teas, Grovember, Biscuits & Groceries - not only is this supported wholeheartedly by Penguin UCA members but Pancake Day and Grovember involve the community. Support of this programme has been long standing at Penguin UCA.

2. Support and engagement with the PALM seasonal workers

This year there was a more organised approach to welcoming the PALM workers. All churches and some organisations were involved in a briefing on the history, culture, religion, lifestyle of the Timor-Leste. A welcome event was organised with the Op Shop which enabled the PALM workers to select warm clothes. From there on there were neighbourhood events organised, cultural events and invitations to sing in the various churches; use of our hall for activities ; participating in the ANZAC DAY service in town; culminating in the participation in the Uniting World service where they sang, read the blessing and had morning tea with the Penguin UCA members. Integration was successful this year. So much so that these PALM workers are keen to return to Penguin next year.

3. Supporting Uniting World

Each year Penguin UCA supports Uniting World at Lent (Lent Event) and at Christmas with the EIC stall. This year we were not involved in the Lent Event and instead celebrated Uniting World Sunday. Money raised is quite substantial. Members are given updates of projects supported and cultural information.

BURNIE REGIONAL

UCAF supported mission activities are: Knitting beanies for NT, fundraising for . Leprosy Mission Grandparents raising grandchildren: Monthly morning tea, Grovember, groceries, biscuits each Christmas, gift vouchers.

Warrawee Women's Shelter: gift vouchers, knitted rugs and beanies.

Frontier Services: Donations for Outback Chaplains

An Affiliated member of World Day of Prayer

These are the main Mission activities of BURNIE REGIONAL UC Cluster

The Stowport Congregation support, encourage and nurture a weekly gathering of the local community, where all are welcome, for morning tea, conversation and includes prayer and singing.

Burnie, Somerset and Stowport's use of buildings for mission supporting local community activities

Burnie has a representative on the combined churches of Burnie and supports the initiatives of that group. e.g. Christmas Carol Service and Easter Service.

WYNYARD

Our community outreach via the Fair/Market and other functions: fundraising for Grandparents Raising Grandchildren and the local Smith Family Organisation. Coffee 'n' Chat monthly.

Help with the local ROC and Food Hub outreach programme.

C2 What are three missional activities your congregation would like to develop?

DEVONPORT

Deepening connection with the Six Rivers First Nation group as they reopen Tiagarra Cultural Centre at the Mersey Bluff.

Continue to explore ways to connect more with the Pride group. We hold a supply of frozen meals for those in need in this community,

Stronger connection with overseas workers as we support them in their local community cultural activities

PENGUIN

* Ecumenism

To enable the 6 churches in Penguin to work together to spread the gospel and support the Penguin Community. This year progress has been made - the Rock has monthly meetings to connect and encourage each other to share the good news of Jesus. Next year there will be an opportunity with The Penguin 150 celebrations when 2 ecumenical services will be held and hopefully we will be able to support the events organised by the other churches.

* Health and wellbeing - participation in 'The Right Place' and support and help for mental illness.

To participate in The Right Place project to ensure our people and our community have access to information about all the services available in the Central Coast to improve our health and wellbeing and address issues such as homelessness and poverty. The Congregation already supports congregational members with mental health issues.

* School Chaplaincy

Support of this programme has improved as now not only are we providing monetary support (\$2000 a year) but are involved in other programmes associated with School chaplaincy eg, breakfasts at school and Formal connections. This is how we can best reach the youth in Penguin and ensure they are supported and have an opportunity to hear the good news.

BURNIE REGIONAL

Would appreciate encouragement and guidance from the new placement in this area.

Investigate local community opportunities for mission

Explore opportunities for utilising property for a community hub.

Explore the opportunity for establishing and connecting with a new Christian Faith Community in Burnie.

WYNYARD

Build on our Fellowship missional activities already existing: Coffee 'n' chat, Brick builders.



C3 How has the congregation changed in the past two years?

DEVONPORT

During COVID and since, we have developed a Zoom community each Sunday

PENGUIN

While we have an aging congregation, we also have new people coming because of our worship style, moved to our area, or know someone. Activities have been downsized to suit abilities.

BURNIE REGIONAL

Decreasing numbers due to death and entering Nursing Homes.
Combining with Wynyard Congregation for worship and fellowship.

WYNYARD

We are all 2 years older, 2 years wiser.
Our combined Services with Burnie and Wynyard at Cam Rise (in Somerset) have rekindled and strengthened our relationship with our neighbouring church family.

C4 What changes and developments are anticipated in the next three to five years?

DEVONPORT

In the last 6 months, our congregation has suffered the loss of 3 very significant members of our congregation. We wish to pause, gather ourselves and consolidate our activities without losing any of what we have gained in the past few years. Then reach out further into the community. Our whole aim with the sale of our old church and moving on was to free ourselves, and allow us to move into the community more.

PENGUIN

Decline in abilities of current active members but some increase in numbers and increasing support for and participation in our community

BURNIE REGIONAL

Continued diminishing numbers of parishioners able to attend church services and church related activities

WYNYARD

Our congregation numbers may decline, we need to be prepared for the changes that come.
Wynyard congregation looks to ways of being relative to its age group, seeking opportunities to involve the greater community in it worship, caring and supporting.
Our widening participation, through the Cluster, within the Indigenous and LGBTQIA+ communities.

D The Community

D1 Describe the wider community in which your ministry is located.

DEVONPORT

Devonport has a population of a little under 26,000. There are 4 primary schools, 2 high schools, several private schools and colleges, and a Year 11 & 12 college. Excellent sporting facilities with some more in the planning stages. Geographically Devonport is on the Mersey River and is the gateway to Tasmania with the 2 'Spirit of Tasmania' roll-on-roll-off ferries arriving daily. Devonport has grown exponentially with the local council's Living City plan coming to fruition with the new parnaple centre ('gathering place' in Punnilerpanner language - library, performing arts, local government offices.) The essence of parnaple reflects past, present and future; communicating a welcoming experience to both visitors and the Devonport community alike.

PENGUIN

Penguin is a quiet coastal town at the foot of rich Northwest farmlands looking north across Bass Strait, nestled between Ulverstone and Burnie. The Uniting Church holds a prominent position in the main street, on the beach front. The beautiful old wooden federation style building with unique 'key-hole' stain glass windows provides a focal point for the community and many tourists.

BURNIE REGIONAL

Burnie is a major port city which is located on a coastal plain ascending to the surrounding hills. It was once a heavy industry town linked to the mining industry of the West Coast but is now more light industry. Stowport is rural in nature. Many of our young people move away for further education or work but many are unemployed and some don't complete their education. There has been a small influx of migrant professional people, mostly medical which has brought some ethnic diversity. Stowport is a rural community

WYNYARD

Wynyard is nestled in a rural area. The town and surrounds is a vibrant active community catering for all ages. It has a number of very active sports clubs; primary, secondary and Catholic schools, with a matriculation college and University campus 20 mins drive to the city of Burnie. NWRH and the local Private Hospital are located in Burnie.

D2 What makes this an enjoyable place to live?

DEVONPORT

Devonport provides a calm, relaxing living environment. Plenty of well situated eating and coffee places, and easily accessible supermarkets, shopping, banks, businesses and accommodation. Country drives are in abundance, and exceptionally well maintained and well lit walking tracks along the rivers and beaches. Many performing arts and concerts happen, especially in winter with the July Jazz Festival. It is a peaceful driving experience along the NW Coast.

Devonport Regional Airport, Spirit of Tasmania Tasmanian Terminal

PENGUIN

Penguin is a busy active little town, people are friendly and caring, its geographical position is attractive to many, situated on the beachfront and not far to the Dial Range for mountain walks, bike trails etc. The community supports whatever is going on.

Numerous sports and community groups of all ages. Regional Athletic Facility and National standard AFL/Cricket stadium, Basketball Stadium, Golf Club etc

BURNIE REGIONAL

We have a temperate climate, scenic coastline, close to mountains, ocean and rural countryside. It is a beautiful part of Tasmania. We have a hospitable and caring congregation. There are a wide variety of social, sporting, cultural and lifestyle activities such as bush walking, hiking, gardening, camping and beaches. A variety of dining opportunities and shorter distances to scenic attractions than most other states. Cradle Mountain, the Tarkine, the West Coast are merely hours away. We also have easy access to historical sites going back to Australia's early convict history.

WYNYARD

We have our glorious Coastline, with accessible white-sand beaches and coastal walks. Easy and close access to wilderness parks for adventures over our rolling hills and mountains in the distance. We are a welcoming community, have some of the cheaper housing in the State.

Our shopping precinct and medical facilities are very pedestrian friendly being flat with wide footpaths and free parking.

Sport plays a great part in the life of the community with 'state of the art' Yacht Club, 2 Golf Clubs, Bowling club, Football and Sports oval, Tennis, basketball and squash courts, Girl Guides and Scouts, and Aeroclub to name a few. Service Clubs are active and welcome new members.

Also have an Aged Care facility.

We have a Regional Airport with 5-6 daily flights to Melbourne.

We are an hour away from the Spirit of Tasmania Terminal at Devonport.

D3 What are the points of stress and pain in the wider community?

DEVONPORT

We also experience homelessness and needy folk, and there is a high suicide rate in the youth population.

PENGUIN

* homelessness

* low level youth crime

* rental/housing is expensive

* cost of living

BURNIE REGIONAL

High youth unemployment, and a high percentage of under-employment.

Lack of affordable housing and therefore homelessness and over the last 18 months youth crime.

Suicide ideation is also prevalent

WYNYARD

As in most areas we do have pockets of low-socio economics and unemployment.

Drug and alcohol abuse and domestic violence is a concern; politics of environment vs mining, wind farms, timber industries etc.

Limited low-cost rentals.

D4 How closely does your congregation reflect the demographics of your local area?

DEVONPORT

It is a good reflection of the local demographic but not as many young people

PENGUIN

Largely our congregation reflects the demographics of the area - mainly a retired population

BURNIE REGIONAL

Not very closely, we are an ageing congregation, most members 80+ while the wider community is younger and more diverse.

The Stowport congregation is more reflective of their community which is rural

WYNYARD

We don't really. We are predominantly an ageing congregation, many with rural ties. Our younger families attend monthly at Messy Church Services.

D5 What community facilities are present in the local area?

DEVONPORT

There is a local hospital, another in Burnie and Launceston. All accessed within an hour's drive.

The local Service Tas centre is located in the paranalpe centre where one can access local and state government needs. There are a number of self interest groups - ie craft groups, history, family history, lapidary club etc. The history information museum reflects Devonport's maritime history.

The local hockey ground has panoramic views of Bass Strait

PENGUIN

- * Sports facilities - National standard Regional Athletic Track, golf club, National Standard AFL & Cricket Stadium, lawn bowls, Basketball Stadium, Australian recognised Surf Club
- * Men's shed
- * Penguin Community Garden
- * District school - Kinder to year 12, Seven Day Adventist School
- * Accommodation of various levels
- * Various shops including an Op shop - money raised goes back into the community.
- * Senior Citizens Club
- * Major Aged care home
- * 2 x Doctor's surgery
- * Skate Park
- * Parks & Playgrounds incl Dog park
- * History Centre
- * Variety of church denominations
- * Service Clubs - Lions, Scouts
- * Children Play Centre
- * Dog Beach
- * Penguin Mountain Bike Track(known nationally and internationally)
- * Cradle Coast Shared Pathway (Latrobe to Burnie)

BURNIE REGIONAL

A range of quality medical facilities including a teaching Hospital, Oncology Unit, Dialysis Unit and access to several Clinics offering a variety of medical services. A Library, Service Clubs, Probus, UTAS Campus, Private and Public schools, Aged Care facilities, choral groups, music bands, range of sporting groups.

WYNYARD

There are several organisations working to overcome disadvantage in all age groups, such as the food hub, after school group for 'at risk teenagers', youth leader program, meals and social opportunities for the lonely, repair café, four op. shops, etc.

There are sports clubs (see D2), Probus, Lions, Rotary, U3A, Choir, Library and Online access centre, community FM radio, Community Garden, Aged Care Home...

Our local Council is highly encouraging of 'good health' with many 'exercise facilities' dotted around the town and beach front.